



Quick Start Guide

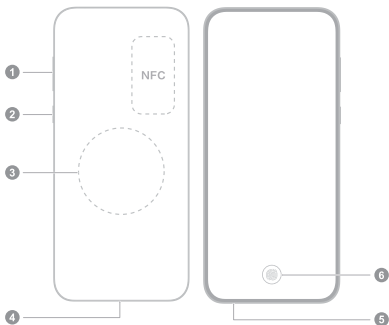
ADY-LX9 HBN-LX9
HBP-LX9




Know Your Device

Before using the device, familiarize yourself with its basic operations.

- To power on your device, press and hold the power button until the screen turns on.
- To power off your device, press and hold the power button, and then touch .
- To restart your device, press and hold the power button, and then touch .



1	Volume button	2	Power button
3	Wireless charging area	4	USB Type-C port/Digital headphone jack
5	Card slot	6	In-screen fingerprint

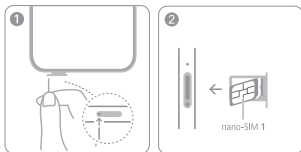
-  • Hold your device close to another device or object so that the NFC detection areas touch when using the NFC function.
- This product only supports digital audio output via the USB Type-C port. Please use a digital audio device or digital-to-analogue audio device.

Getting Started

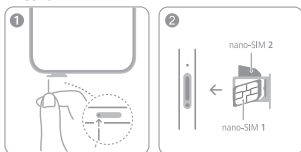
- ⚠ Be careful not to scratch your device or hurt yourself when using the eject pin.
- Store the eject pin out of the reach of children to prevent accidental swallowing or injury.
- Do not use cut or modified SIM cards with your device as these may not be recognized and could damage the card tray (slot).
- If your SIM card does not match your device, please contact your carrier.

Follow the instructions in the following figures to set up your device. Please use the eject pin included. Ensure that the card is correctly aligned and its notch is first inserted into the card tray.

Single-SIM card:




Dual-SIM card:



SIM Card Management

Select the default mobile data card and calling card as needed.


-  • Mobile network services require the support of your carrier's network and the deployment of relevant services. Contact your carrier to activate mobile network services.
- Some of the aforementioned features may be unavailable in certain areas due to network interference.
- If this guide is inconsistent with the description on the official website, the latter prevails.

For More Information


If you encounter any problems while using your device, you can obtain help from the following resources:

- Visit <https://consumer.huawei.com/en> to view device information, frequently asked questions and other information.
- Visit <https://consumer.huawei.com/en/support> for the most up-to-date contact information for your country or region.
- Go to **Settings** and enter the following keywords in the search box to view the corresponding information. E.g. **Legal, Safety information, Authentication info, Certification logos.**

Safety Information

 [Warning] Please read all of the safety information carefully before using your device to ensure its safe and proper operation and to learn how to dispose of your device properly.

Operation and safety

-  To prevent possible hearing damage, do not listen at high volume levels for long periods.
- Using an unapproved or incompatible power adapter, charger, or battery may damage your device, shorten its lifespan, or cause a fire, explosion, or other hazards.
- Ideal operating temperatures are 0°C to 35°C. Ideal storage temperatures are -20°C to +45°C.
- Pacemaker manufacturers recommend that a minimum distance of 15 cm be maintained between a device and

a pacemaker to prevent potential interference with the pacemaker. If using a pacemaker, hold the device on the side opposite the pacemaker and do not carry the device in your front pocket.

- Keep the device and the battery away from excessive heat and direct sunlight. Do not place them on or in heating devices, such as microwave ovens, stoves, or radiators.
- Observe local laws and regulations while using the device. To reduce the risk of accidents, do not use your wireless device while driving.
- While flying in an aircraft or immediately before boarding, only use your device according to instructions provided. Use of a wireless device in an aircraft may disrupt wireless networks, present a hazard to aircraft operation, or be illegal.
- In order to avoid damaging the internal circuit of the device or charger, do not use the device in a dusty, damp, or dirty place, or near a magnetic field.
- The power plug is used as the disconnect device. For pluggable equipment, the socket-outlet shall be easily accessible. Use approved power adapters and chargers.
- Unplug the charger from electrical outlets and the device when not in use.
- Do not use, store or transport the device where flammables or explosives are stored (in a gas station, oil depot, or chemical plant, for example). Using your device in these environments increases the risk of explosion or fire.
- Keep the battery away from fire, and do not disassemble, modify, throw, or squeeze it. Do not insert foreign objects into it, submerge it in water or other liquids, or expose it to external force or pressure, as this may cause the battery to leak, overheat, catch fire, or even explode.
- Dispose of this device, the battery, and accessories according to local regulations. They should not be disposed of in normal household waste. Improper battery use may lead to fire, explosion, or other hazards.
- This device contains a built-in battery. Do not attempt to replace the battery by yourself. Otherwise, the device may not run properly or it may damage the battery. For your personal safety and to ensure that your device runs

properly, you are strongly advised to contact a Huawei authorized service center for a replacement.

- Ensure that the power adapter meets the requirements of IEC/EN 62368-1 and has been tested and approved according to national or local standards.
- Your device meets requirements of IP68 (IEC 60529).

Disposal and recycling information



The symbol on the product, battery, literature, or packaging means that the products and batteries should be taken to separate waste collection points designated by local authorities at the end of the lifespan. This will ensure that EEE waste is recycled and treated in a manner that conserves valuable materials and protects human health and the environment.

For more information, please contact your local authorities, retailer, or household waste disposal service or visit the website <https://consumer.huawei.com/en/>.

Reduction of hazardous substances

This device and its electrical accessories comply with local applicable rules on the restriction of the use of certain hazardous substances in electrical and electronic equipment, such as EU REACH regulation, RoHS and Batteries (where included) directive. For declarations of conformity about REACH and RoHS, please visit the website <https://consumer.huawei.com/certification>.

RF Exposure Information

The World Health Organization has stated that exposure can be reduced by limiting your usage or simply using a hands-free kit to keep the device away from the head and body.

Ensure that the device accessories, such as a device case and device holster, are not composed of metal components. Keep the device away from your body to meet the distance requirement.

For the countries that adopted the SAR limit 2.0 W/kg over 10 grams of tissue.

The device complies with RF specifications when used near your ear or at a distance of 0.50 cm from your body.

ADY-LX9: The highest reported SAR value: Head SAR: 0.99 W/kg; body SAR: 1.29 W/kg.

HBN-LX9: The highest reported SAR value: Head SAR: 0.99 W/kg; body SAR: 1.29 W/kg.

HBP-LX9: The highest reported SAR value: Head SAR: 0.99 W/kg; body SAR: 1.29 W/kg.

EU regulatory conformance

Statement

Hereby, Huawei Device Co., Ltd. declares that this device ADY-LX9 / HBN-LX9 / HBP-LX9 is in compliance with the following Directive: RED 2014/53/EU, RoHS 2011/65/EU, ErP 2009/125/EC.

The full text of the EU declaration of conformity, the detailed ErP information and most recent information about accessories & software are available at the following internet address: <https://consumer.huawei.com/certification>.

This device may be operated in all member states of the EU.

Observe national and local regulations where the device is used.

This device may be restricted for use, depending on the local network.

Restrictions in the 5 GHz band:

The 5150 to 5350 MHz frequency range is restricted to indoor use in: AT, BE, BG, CH, CY, CZ, DE, DK, EE, EL, ES, FI, FR, HR, HU, IE, IS, IT, LI, LT, LU, LV, MT, NL, NO, PL, PT, RO, SE, SI, SK, TR, UK(NI).

Frequency Bands and Power

The frequency bands and transmitting power (radiated and/or conducted) nominal limits applicable to this radio equipment are as follows:

ADY-LX9	GSM 900: 35.5 dBm, GSM 1800: 32.5 dBm, WCDMA900/2100: 25.7 dBm, LTE Band 1/3/7/8/20/28/34/38/40/42: 25 dBm, Bluetooth 2.4GHz: 20 dBm, Wi-Fi 2.4GHz: 20 dBm, Wi-Fi 5GHz: 5150-5250 MHz: 23 dBm, 5250-5350 MHz: 23 dBm, 5470-5725 MHz: 23 dBm, 5725-5850 MHz: 14 dBm, NFC 13.56 MHz: 42 dB μ A/m @ 10 m, Wireless Power Charging: 110-119 KHz: 42 dB μ A/m @ 10 m, 119-135 KHz: 66 descending 10 dB/dec above 119 KHz dB μ A/m @ 10 m, 135-140 KHz: 42 dB μ A/m @ 10 m, 140-148 KHz: 37.7 dB μ A/m @ 10 m
HBN-LX9 HBP-LX9	GSM 900: 35.5 dBm, GSM 1800: 32.5 dBm, WCDMA900/2100: 25.7 dBm, LTE Band 1/3/7/8/20/28/34/38/40/42: 25 dBm, Bluetooth 2.4GHz: 20 dBm, Wi-Fi 2.4GHz: 20 dBm, Wi-Fi 5GHz: 5150-5250 MHz: 23 dBm, 5250-5350 MHz: 23 dBm, 5470-5725 MHz: 23 dBm, 5725-5850 MHz: 14 dBm, NearLink 2.4GHz: 10dBm, NFC 13.56 MHz: 42 dB μ A/m @ 10 m, Wireless Power Charging: 110-119 KHz: 42 dB μ A/m @ 10 m, 119-135 KHz: 66 descending 10 dB/dec above 119 KHz dB μ A/m @ 10 m, 135-140 KHz: 42 dB μ A/m @ 10 m, 140-148 KHz: 37.7 dB μ A/m @ 10 m

Legal Notice

Trademarks and Permissions

LTE is a trademark of ETSI.

The *Bluetooth*[®] word mark and logos are registered trademarks owned by *Bluetooth SIG, Inc.* and any use of such marks by Huawei Technologies Co., Ltd. is under license. Huawei Device Co., Ltd. is an affiliate of Huawei Technologies Co., Ltd.

Wi-Fi[®], the Wi-Fi CERTIFIED logo, and the Wi-Fi logo are trademarks of Wi-Fi Alliance.

Copyright © 2024 Huawei Device Co., Ltd. All Rights Reserved.

ALL PICTURES AND ILLUSTRATIONS IN THIS GUIDE, INCLUDING BUT NOT LIMITED TO THE DEVICE

COLOR, SIZE, AND DISPLAY CONTENT, ARE FOR YOUR REFERENCE ONLY. THE ACTUAL DEVICE MAY VARY. NOTHING IN THIS GUIDE CONSTITUTES A WARRANTY OF ANY KIND, EXPRESS OR IMPLIED.

Privacy Policy

To better understand how we protect your personal information, please see the privacy policy at <https://consumer.huawei.com/privacy-policy>.